

User's Manual LED Touch Lights

Please read completely before use.

Remote +
touch version

I. Specifications

Input Power Supply:	5V, 2A	Lumens:	120 LM
Output Power:	5V	Remote Control Range:	5–8 Meters
Light Source:	RGB LED	Size of the Product:	10.3 x 9 x 3 CM
Power Consumption:	1.2W	Length of USB Cable:	5 Feet/1.5 Meters

II. Cautions

1. Please use a high-quality AC adapter (Output: 5V, 2A) for optimal performance.
2. Do not connect more than twelve (12) LED touch lights together.
3. The center of the light responds best to the touch function.
4. Always point the remote control towards the lights, and ensure you are within range (5-8 meters).

III. Remote Control Functions

Buttons	Functions	Buttons	Functions
ON/OFF	Turns On/Turns Off	Clock	Sets LED Lights on a Timer –Turns Off After 30 Minutes
FLASH	Makes All Colours Glow	Colour Selections	Choice of Colours
FADE	Smoothly Shuffles Colours	Arrow Upward	Brightness Up (4 Levels)
JUMP	Quickly Changes Colours	Arrow Downward	Brightness Down (4 Levels)

IV. Installation Instructions

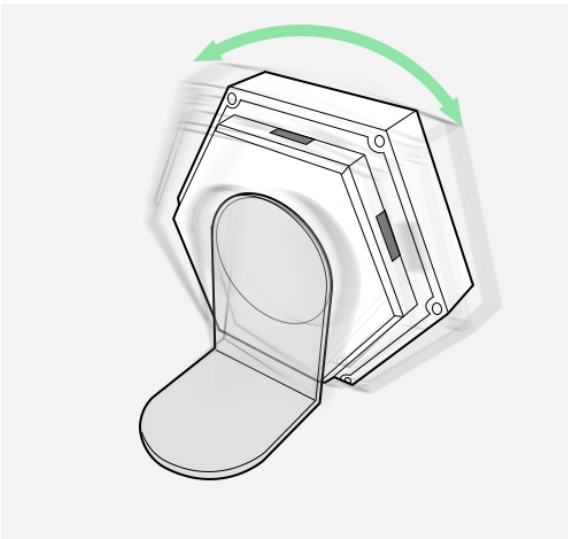
1. Place all Lights face-down. Insert the PCB Boards to connect the lights. Build a design of your choice. Keep the side of the USB board with the arrow facing towards the front of the light.
2. Secure multiple lights together by using the included corner connectors
3. Insert the USB Cable into an AC adapter or other USB-power source. Connect the other end of the USB Cable to one of the LED Touch Lights.
4. Remove the plastic piece from the battery compartment to activate the Remote Control. Press ON while pointing at the lights. Make sure every light works. Try using different PCB Boards if any of the lights don't work properly.
5. Unplug the LED Touch Lights from the power source and then place the lights face-down on a flat surface. Peel the paper from the double-sided adhesive and stick one side to the circle on the back of the lights.
6. Find a place to display the LED Touch Lights. After cleaning and drying the area, stick the LED Touch Light with the adhesive tape on it on to the wall. The PCB Boards are strong enough to support the lights on a hook, nail, or screw (not included).
7. Connect the LED Touch Lights to the power source again. Choose from the available colors and mode settings using the remote control or touch the lights individually to change the colors or mode settings and customize the glowing pattern.

V. How to use the stand:

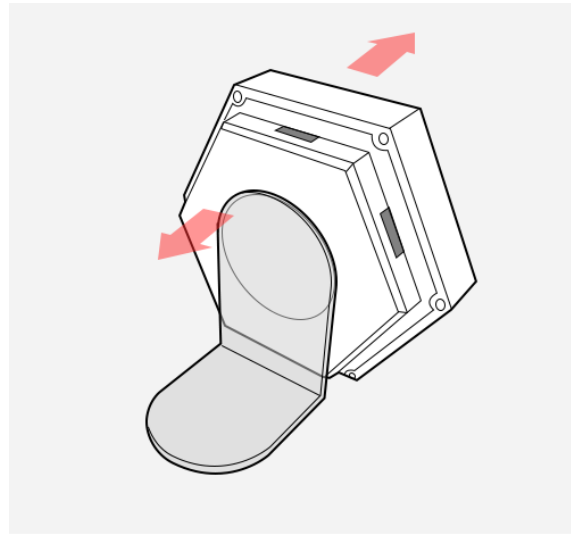
Use the plastic L-shaped stand to stand the hexagon tiles upright on a table.

1. Link the lights with the USB connecting boards according to your own design.
2. Connect the USB power cable to check if every light is working, and then pull out the USB cable.
3. Put a sticker pad on the light you plan to have at the bottom of your design (touching the table).
4. Peel the 2 protection films from the L stand making sure the shorter side of the L stand is on the table.
5. Place the bottom light on its side on the table and hold it straight, push the L stand (shorter side on table) to the sticker on the back of the bottom light and stick them together.
6. Put another sticker pad on the shorter side of the L stand (facing the table).
7. Clean the area on the table where you want to put the lights. And then put the stand with the lights there.

Tips of removing the stand from the table:



Pull or push from side slowly to remove the stand from the table.



Do not push or pull forward or backward, or the stand would be broken!